

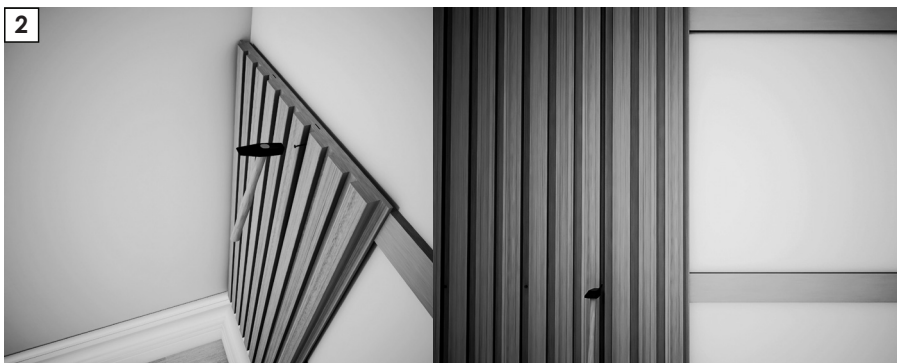


WALL PROFILE
INSTALLATION GUIDE

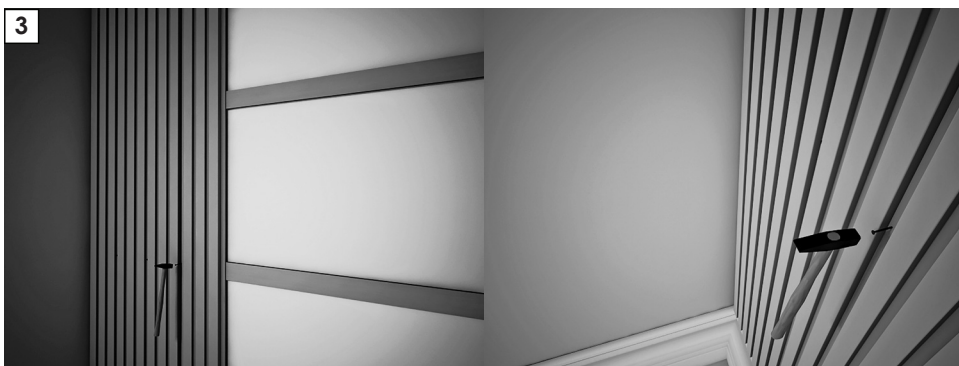
 **AGT**
innovation chasers



1
Carcasses are mounted on the wall at least 40 cm apart.



2
Mounting to the carcass is carried out by driving glass nails through the profile gaps.



3
The nail driving process is continued downwards on the carcasses.

4



The visible heads of the nailed nails are cut with the help of pliers.

5



Then it is entered into the profile with the help of a hammer.
Or instead of this whole process, a headless nail gun can be used.



agt.com.tr

[f](#) [t](#) [p](#) [i](#) [v](#) [y](#) /agtthinkwithus

Merkez | Head Office

Organize Sanayi Bölgesi
3. Kısım, 35. Cadde, 07190
Döşemealtı, Antalya, Türkiye
Tel: +90 242 249 17 17
Fax: +90 242 249 17 27

İstanbul Ofis | Istanbul Office

Kısıklı Mh. Alemdağ Cad. No: 36
34693 Çamlıca, İstanbul, Türkiye
Tel : +90 216 344 82 48
Fax : +90 216 316 82 48